

# MONTHLY MEMBERSHIP PROGRESS REPORT

District 11 D2

Results as of: 3/31/2026

GMT:

LOCATION MICHIGAN

GMT CA

Clubs			
RESULTS FOR 2025-2026			
QUARTER	NEW CLUB GOAL	NEW CLUBS	DROPPED CLUBS
JULY/AUG/SEPT	0	0	1
OCT/NOV/DEC	1	0	1
JAN/FEB/MAR	0	0	0
APR/MAY/JUNE	0	0	0

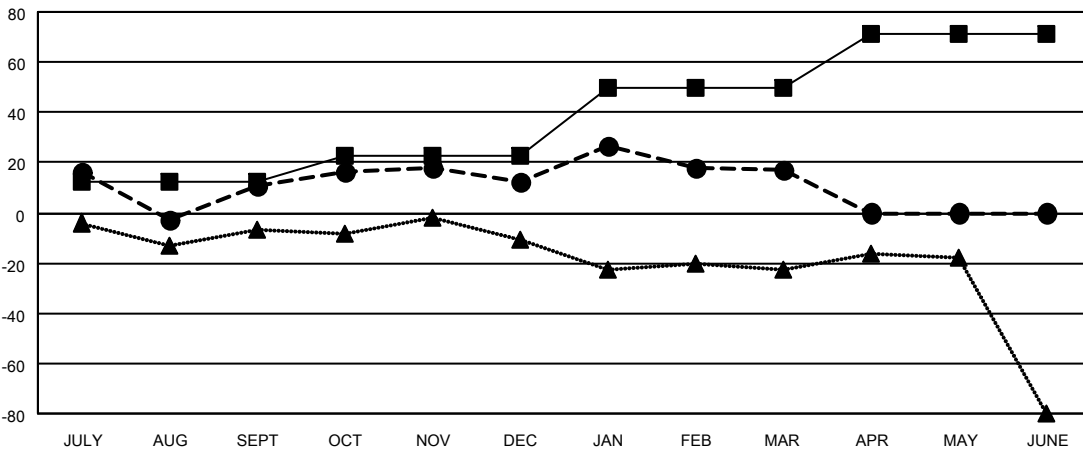
Members			
RESULTS FOR 2025-2026			
QUARTER	MEMBER GROWTH NET GOAL	MEMBER GROWTH ACTUAL	DROPPED MEMBERS ACTUAL (including transfers)
JULY/AUG/SEPT	12	48	34
OCT/NOV/DEC	11	31	26
JAN/FEB/MAR	27	47	40
APR/MAY/JUNE	21	0	0

GOALS AND ACTUAL NEW CLUBS CUMULATIVE



- - CURRENT YEAR GOALS FOR NEW CLUBS
- - CURRENT YEAR ACTUAL NEW CLUBS
- ▲ - LAST YEAR ACTUAL NEW CLUBS

GOALS AND ACTUAL MEMBERS CUMULATIVE



- - MEMBER GROWTH NET GOAL
- - MEMBER GROWTH ACTUAL
- ▲ - LAST YEAR MEMBERSHIP ACTUAL

DROPPED CLUBS: 2	24 CLUBS OF 45 ADDED 1 OR MORE NEW MEMBERS	<b>GENDER DISTRIBUTION</b> MALE 818 (70.15%) FEMALE 347 (29.76%)
<b>DROPPED MEMBERS</b> DECEASED 6 CLUB CANCELLED 1 OTHER 93 <b>TOTAL 100</b>	<a href="#">CLICK HERE FOR CUMULATIVE MEMBERSHIP DATA</a>	TOTAL FAMILY UNIT MEMBERS 173 FAMILY MEMBERS PAYING HALF DUES 88